

Alfred University Saxons  
1935-1936 Wrestling

# WRESTLING

## 1935-1936

Joseph Seidlin  
Coach

Sidney Tover  
Manager



### SUMMARY

Alfred	-	-	-	23	Mansfield	-	-	-	10
Alfred	-	-	-	8	St. Lawrence	-	-	-	28
Alfred	-	-	-	34½	Buffalo	-	-	-	1½
Alfred	-	-	-	36	Buffalo	-	-	-	0
Alfred	-	-	-	18	Rochester Mechanics	-	-	-	14
Alfred	-	-	-	19½	Stroudsburg	-	-	-	10½



SQUAD



# WRESTLING



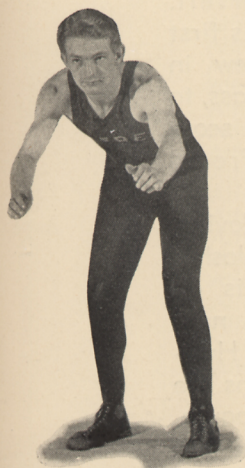
Whitmore



Woloshin



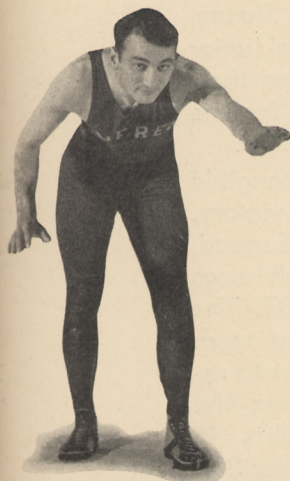
Nevius  
Co-Captain



Brundage



Corbman



Topper

Unheralded Alfred's wrestling potentialities developed into the finest group of mat men ever sent to represent our University in intercollegiate competition. At the close of the season, wrestling was justly recognized as the most successful sport of the year. Nineteen thirty-six marked a new birth in interest and possibility as the grapplers swept through a six-meet schedule with but one defeat. Under the impetus gained from previous seasons, co-captains Fine and Nevius led wrestling to a new height. When they graduate this June, Alfred will be grateful for their inspiration.

The first victim of the season was Mansfield, a previous conqueror. Sid Fine gained the only fall but Whitmore, Brundage, Nevius, Corbman and Thomas won on time. Woloshin completed the scoring by adding three points in pinning his opponent in a longer period than he, himself, was pinned. This 23-10 victory started a scoring spree which carried the Saxons through the season.

A last minute trip due to uncertain weather carried the squad to its only defeat. Arriving in St. Lawrence ten minutes before the match was scheduled, Alfred was forced to wrestle without



Thomas





rest, which severely handicapped the team. Fine won by a fall in the fourth overtime period and Brundage scored with a time advantage. St. Lawrence's strength in the upper classes caused the Saxon downfall.

Four days later, the postponed match with Buffalo was held at home. Co-captains Nevius and Fine won by falls as did Whitmore, Brundage, and Thomas. Sam Topper won by time. Woloshin at 155, drew in the 175-pound bout. Corbman gained five points by forfeit.

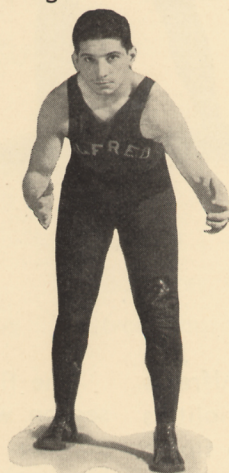
The return match at Buffalo was the first shut-out victory ever scored by Alfred's mat men. Whitmore, Brundage, Paquin, Nevius, Woloshin, and Thomas won by falls while Fine and Topper came through with time decisions. This definitely established the power of the Saxon squad.

Rochester Mechanics, who had five straight wins for the season, succumbed 18-14. The final outcome of the meet was a toss-up till Thomas won his match in the heavyweight class. Fine, Brundage and Nevius delivered falls for the margin of victory. In the 145-pound bout Paquin tore a ligament in his side but staved off a fall.

The last match with Stroudsburg was a fitting close, avenging a 30-0 shut-out defeat suffered in 1934. Nevius and Brundage scored falls,

Thomas won on time, Whitmore by forfeit. McAndrews in his first varsity bout drew in the 175-pound class, to make the final score  $19\frac{1}{2}$ - $10\frac{1}{2}$ , Alfred's favor.

The loss of Nevius, Fine, Topper, Woloshin and Corbman is an extreme blow to next year's squad. However, four veterans are returning — Paquin, Thomas, Brundage and Whitmore. Phil



Fine  
Co-Captain

Brundage, the only undefeated member of the squad, was unanimously elected captain for next year. Andrews, Ohmitie, Sloane, Tracy and Derowitch of the junior varsity all have demonstrated their value and will be fighting for the vacancies caused by graduation.

With the birth of an intangible spirit of work and desire for victory, which came about in the 1936 squad, Alfred looks forward with high hopes for another fine season in 1937. The drawing effect of a winning team may bring forth hidden talent to replace the five seniors leaving the squad. With these thoughts in mind we wait expectantly for the opening of the 1937 season, confident that it will be a success.