

WRESTLING



ROW ONE: Henry Ferguson 112 lb.
Ken Moore 120 lb.
Jim Beaser 103 lb.
Mark Case 127 lb.
Dennis Flack 98 lb.
Tom Class 138 lb.

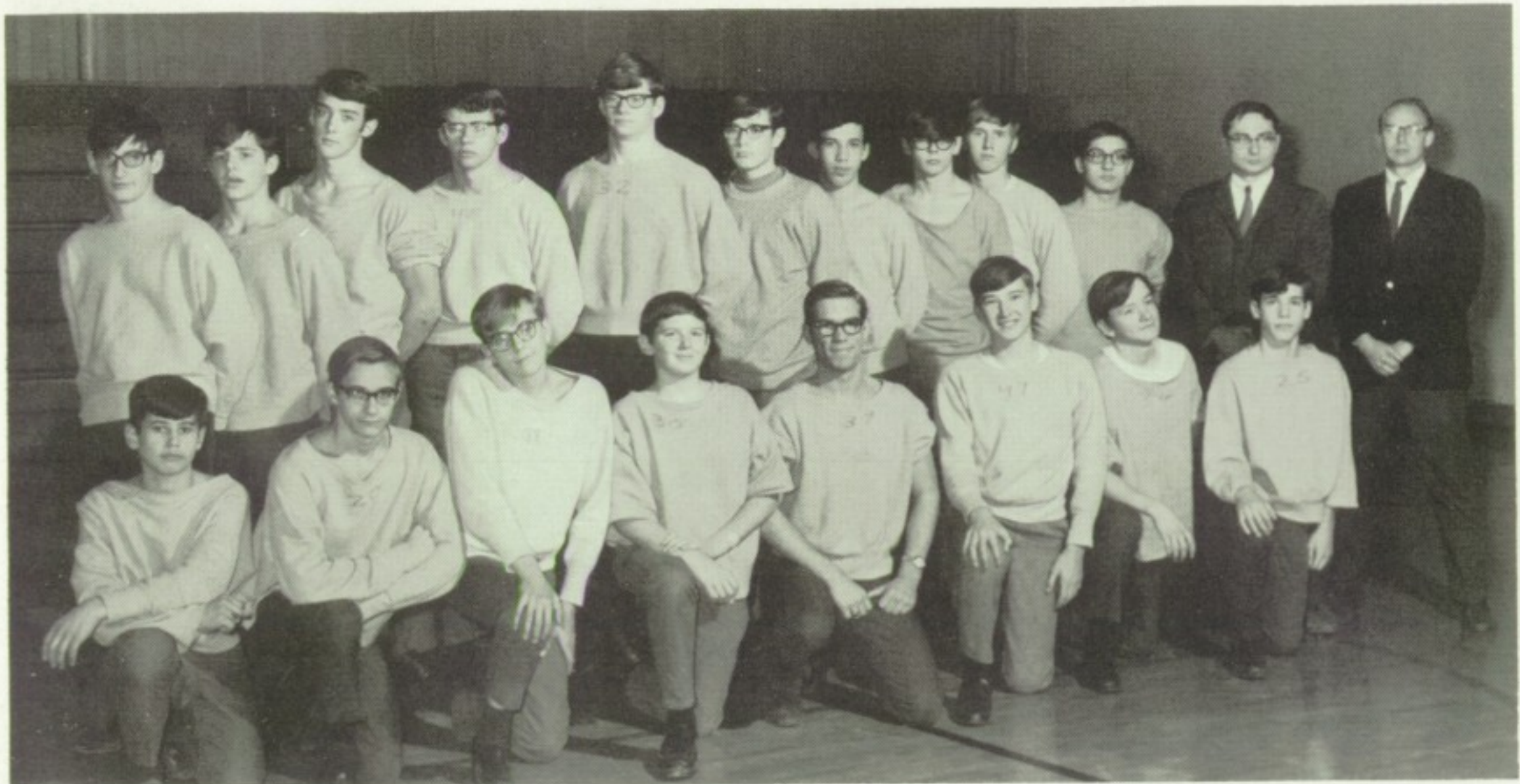
ROW TWO: John Pashong Manager
Stuart Otto 133 lb.
Zane McMullum 145 lb.
Tim Monkelbaan Hvy. wt.
Mr. Hobart Coach
Ed Hamilton 165 lb.
Tim Dunmyer 175 lb.
Bob Burg 154 lb.
Tim Hagan Manager

The Spartan wrestling team finished another fine season with a record of 10 wins and 3 losses. The only league defeat came at the hands of Medina through a close 23-21 decision. Starpoint hosted the league tournament this year but finished second to Newfane by another close score, this time 62-60. Among the individual champions of the league are senior captain, Jim Beaser, who recorded his second championship for Starpoint at 103, senior Ken Gailie, winning his first at 112, and junior Stewart Otto, who repeated at 133. Senior Mark Case was defeated in the finals by the sectional champ from Newfane for a second place finish; sophomore Bob Burg was defeated in the finals by the sectional runner-up from Medina, for another second, and defending champ Ed Hamilton at 168 wrestled at 178 to meet defending league and sectional champ John Drisdon from Albion, to lose in over time, after an exciting 9-9 draw in the regulation six minutes. Seniors Ken Moore and Tim Dunmyer rounded out Starpoint's place winners, by both winning third.

In the Section VI Class A tournament at Gowanda, Starpoint showed its fine over-all balance by placing second although held to one champion, outstanding Stew Otto. Spartan points were earned by a fourth taken by Ken Moore, third taken by Jim Beaser and Ken Gailie, and second fought for by seniors Tom Class and Ed Hamilton.

Although Starpoint wrestlers will sorely miss the graduating seniors, returning varsity wrestlers Tim Monklebaan and Dennis Flack, in addition to Stew Otto and Bob Burg, will provide the nucleus for a successful 1969-70 grappling squad.

WRESTLING



ROW ONE: Paul Drinkwater, Allen McMichael, Ralph Bayles, Bill Heaton, Jim Anderson, Rodney Kever, John Class, Al Demester. ROW TWO: Mark Jenks, Gene Holler, Jan Berry, Richard Heaton, Peter Hasely, Keith Aikenhead, Tom D'Orazio, Terry Donnelson, Chuck Donelson, Bob Gately, Coach Gaylord, Coach Hobart.

SENIORS

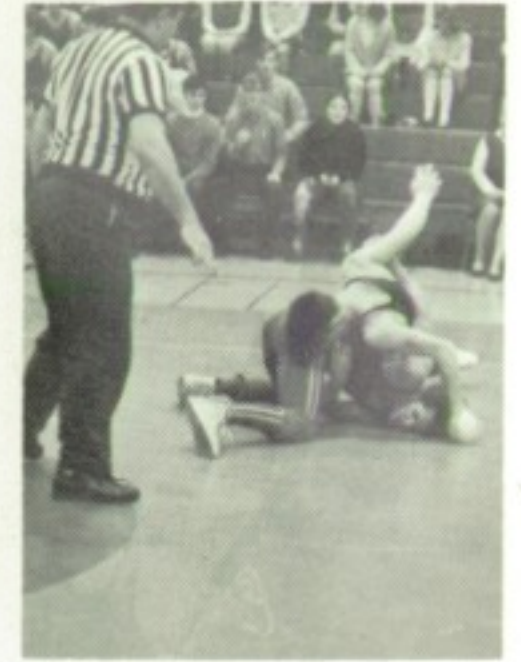
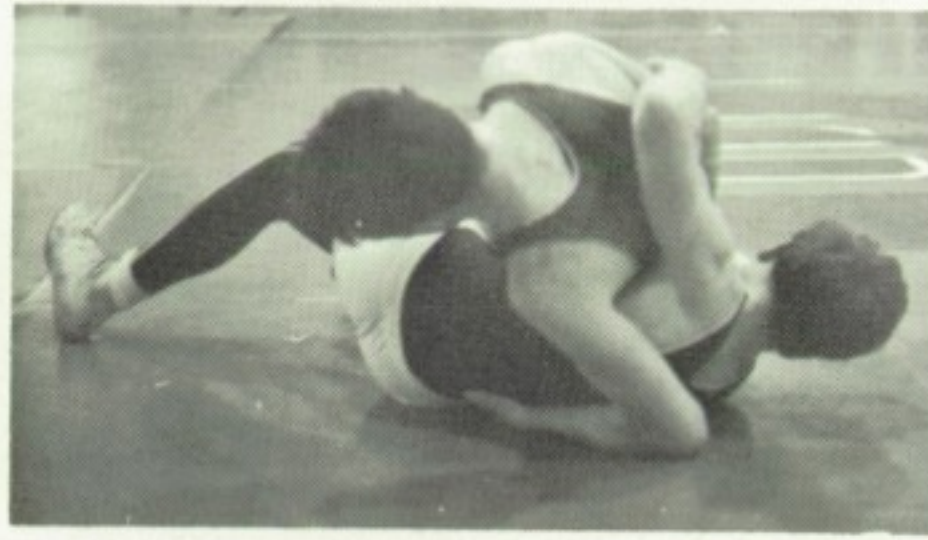


ROW ONE: Zane McCollum, Tom Class, Jim Beaser (captain), Mark Case, Ken Moore. ROW TWO: Ed Hamilton, Coach Gaylord, Tim Dunmyer.

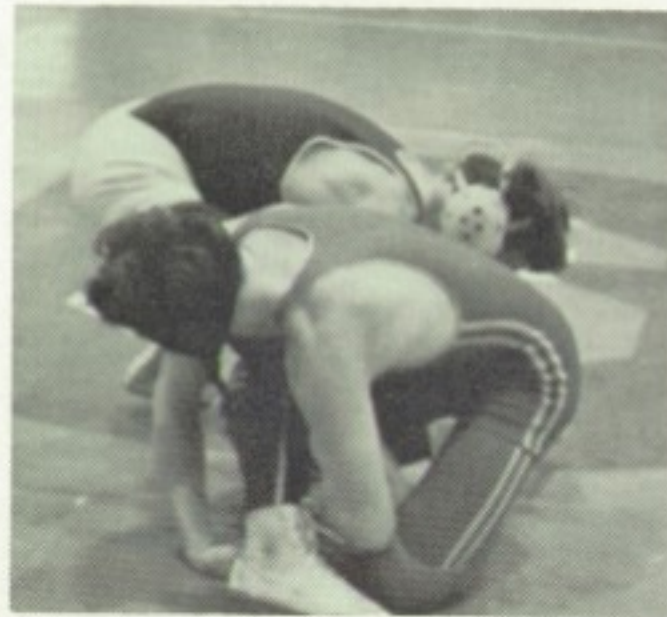
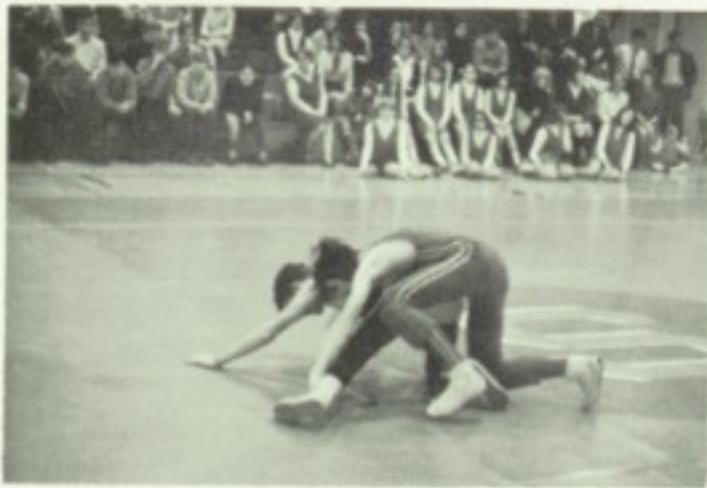
SCORES

| | | | |
|-----------|----|----|--------------|
| Starpoint | 38 | 3 | Barker |
| Starpoint | 26 | 19 | Alden |
| Starpoint | 21 | 23 | Medina |
| Starpoint | 29 | 21 | Newfane |
| Starpoint | 47 | 5 | Wilson |
| Starpoint | 44 | 8 | Akron |
| Starpoint | 23 | 17 | Newfane |
| Starpoint | 17 | 25 | Arcade |
| Starpoint | 32 | 12 | Barker |
| Starpoint | 43 | 8 | Roy Hart |
| Starpoint | 15 | 27 | Grand Island |
| Starpoint | 39 | 11 | Albion |
| Starpoint | 40 | 5 | Roy Hart |

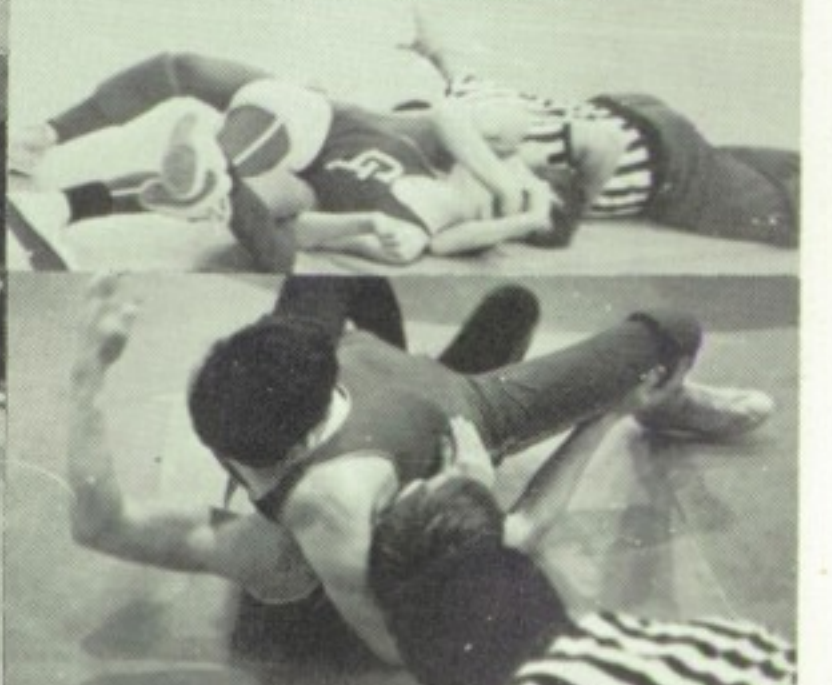
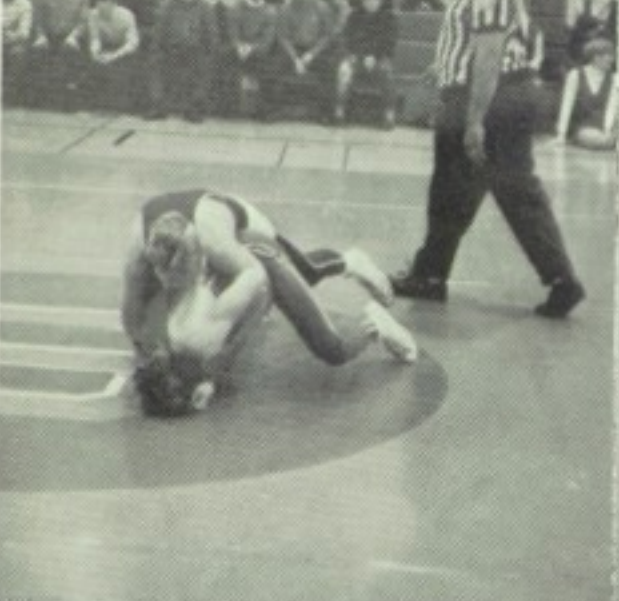
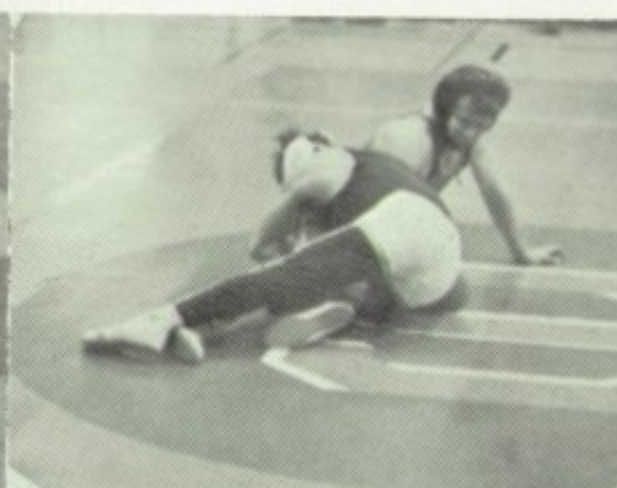
Starpoint Spartans
1968-1969 Wrestling



SENIORS



WRESTLERS IN ACTION



WINTER CHEERLEADERS



Kathy Wyant, Sharon Berube, Sandy Haseley, Peggy Lotz, Kathy Lange, Pat Forth, Linda Wendt, Debbie Stankovich.



Linda Wendt (captain)

JUNIOR VARSITY



ROW ONE: Sue Reckin, Nadine Wendt, Gail Galtieri, Linda Carpenter. ROW TWO: Linda Walker, Diane Berry. ROW THREE: Teresa Labuszewski, Diane Schul.



ROW ONE: Becky Hill, Janice Billingsley. ROW TWO: Diane Zeilinski, Ester Hagan, Sharon Galtieri, Lynn Eggert. ROW THREE: Lynn Brogan, Irene Malnor.

WRESTLING

