

J.V. WRESTLING CHEERLEADERS



J.V. WRESTLING CHEERLEADERS—ROW 1: Lisa Carlson, Kathy Johnson. ROW 2: Wendy Sharp. ROW 3: Vikki Beil, Leigh Fiorenzo, Sara Nelson, Kathy Steele. ROW 4: Sherri Lehman.

MAT MAIDS



MAT MAIDS—ROW 1: DeDe Errico. ROW 2: Dawn Moore, Deana Marsden, Michelle Parker, Becky Pratt. ROW 3: Debbie Barrus, Becky Griffio, Dena French, Mary Smith, Barb Helgren.

GRAPPLERS IN SUCCESSFUL SEASON



ROW 1: Jim Nalbone, Todd Tuccio, Mark Hetrick, Mike Tudor, Jay Young, Mike Schnell, Terry Vine, George Holton, Albert Muhlbauer, Dave Nalbone. ROW 2: Mat Raines, Kurt Meekins, Dave Swiderski, John Marucci, Rick Zingale, Roger Tellinghuisen, Ted Toy, Mark Chase, Bill Swiderski, John Helgren, Chris Williams, Shawn Jones, Mr. Curt Miceli, Assistant Coach.

The Maple Grove wrestlers produced an outstanding year for themselves with a 13-1 record. They placed first in a tough Newfane Tourney, second in the Fredonia Tourney, fourth in St. Bona's Tourney representing 32 teams, and fifth in possibly the toughest tourney in New York State, the 18 team Hilton Tourney.

Mark Hetrick placed first in all four Tourneys and John Helgren placed first in three and second at St. Bonaventure. Both placed first in the league and state qualifying tournaments.

George Holton placed third at both Newfane and Hilton. Placing first were Jim Nalbone, Jon Hanson, Jay Young and Ted Toy. Placing second was George Holton, followed by Bill Swiderski in third place and Roger Tellinghuisen and Bryan Errico in fourth place. Jim Nalbone placed third and Ted Toy placed fourth in the Hilton Tourney.

At the Fredonia Tourney, Jim Nalbone placed first, George Holton was second, Terry Vine was third, and Roger Tellinghuisen, Bryan Errico and Ted Toy placed fourth. In the St. Bona's Tourney Ted Toy placed second and Jim Nalbone placed sixth.

In the Southern Tier League Tourney, placing first were Mark Hetrick and John Helgren; Roger Tellinghuisen, second; Jim Nalbone, Albert Muhlbauer, Jon Hanson, George Holton and Ted Toy placed third; and Jay Young and Bryan Errico placed fourth. The first four place winners qualified for the state qualifier at Sweet Home. Mark Hetrick and John Helgren represented Maple Grove in the State Tourney, and John brought sixth place in the state home to Maple Grove.

Mark Hetrick broke a record that had been set by another great M.G. wrestler, Tim Prince, with most wins of 106. Mark broke this record with a total of 135 wins. Mark also had the best individual season record in the history of Maple Grove with 36-0.

Coach Errico said, "This was a team that was a pleasure to coach. I hope I have more teams like this one in the future."

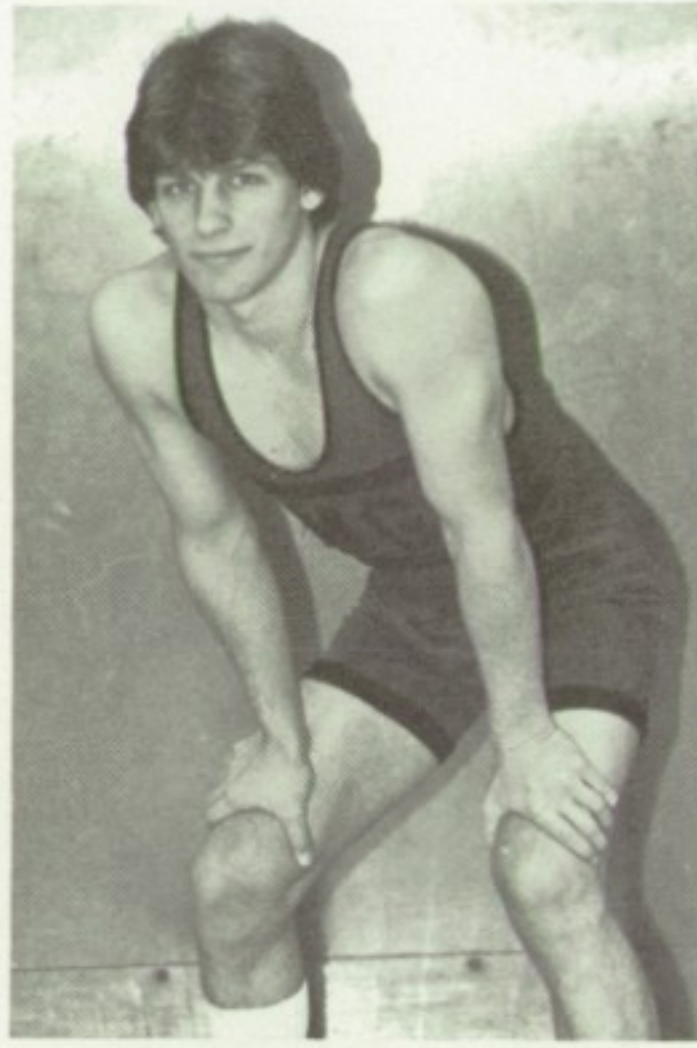


Wrestling Coach, Richard Errico.

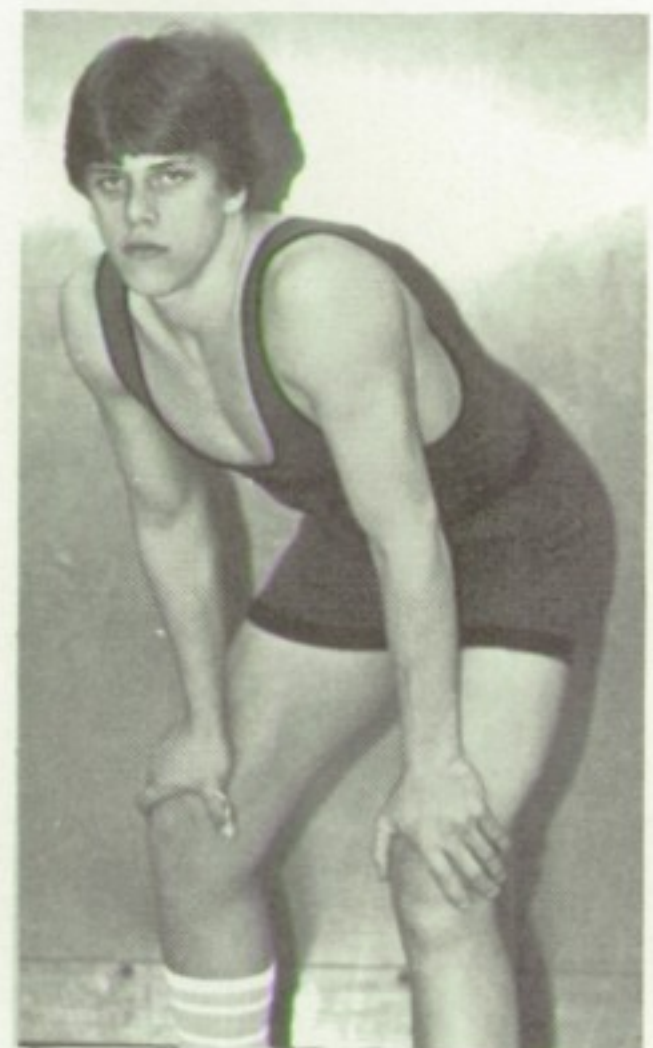
WRESTLING SENIORS



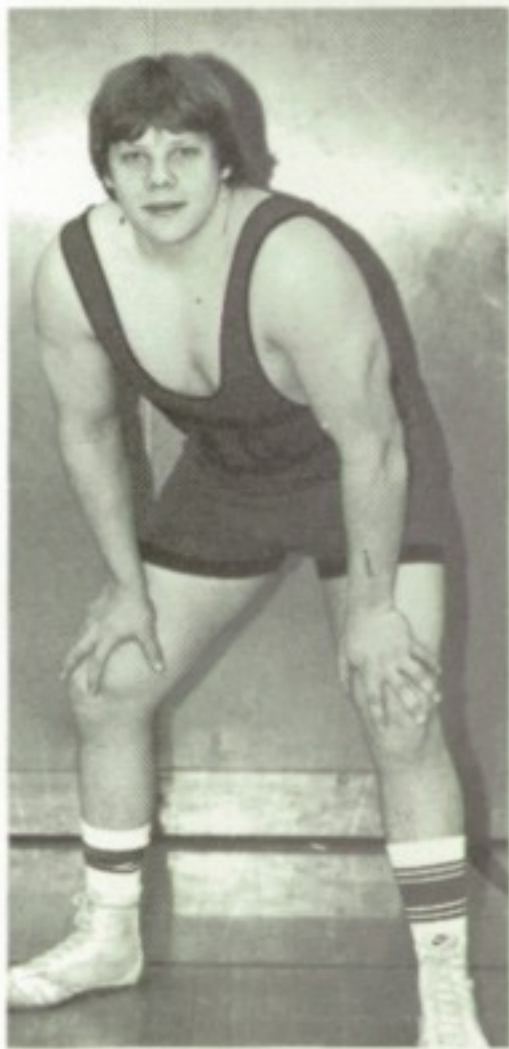
"Chris"



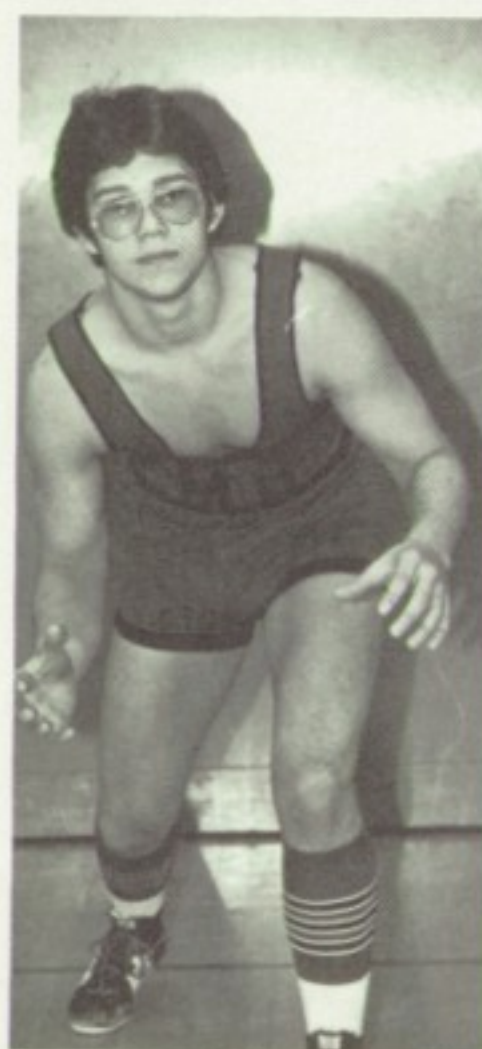
"George"



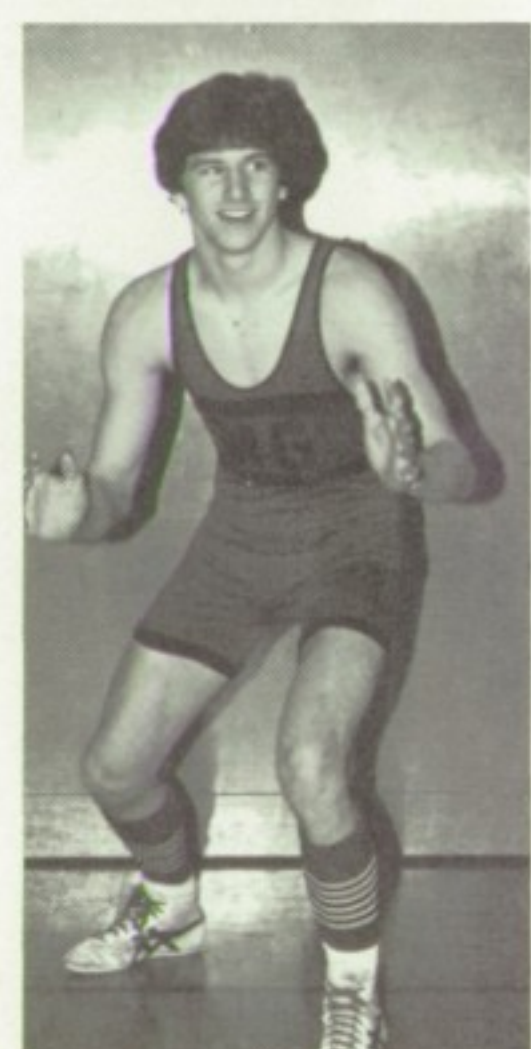
"Rick"



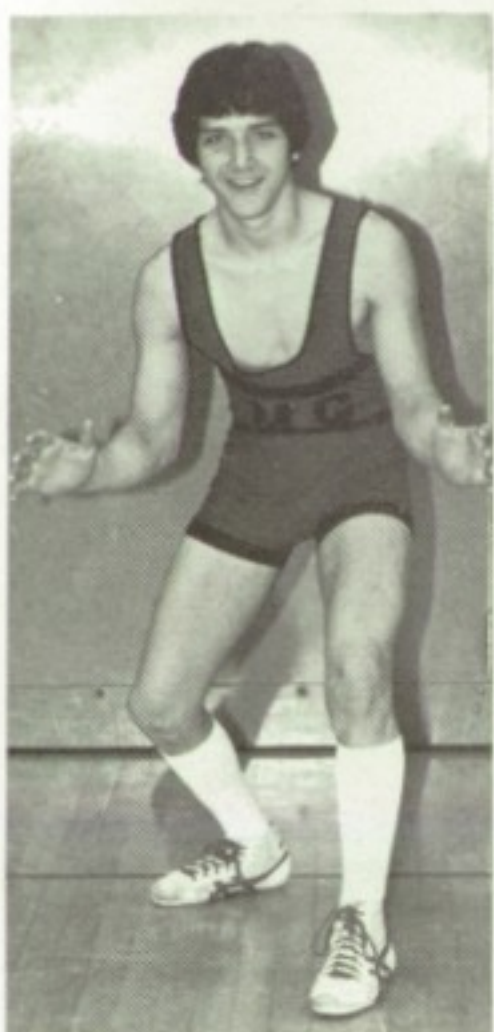
"John"



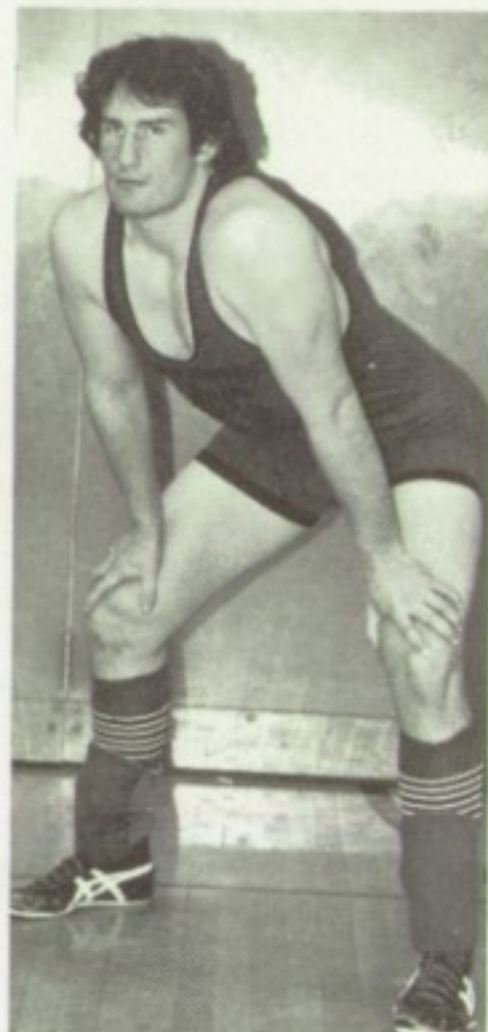
"John"



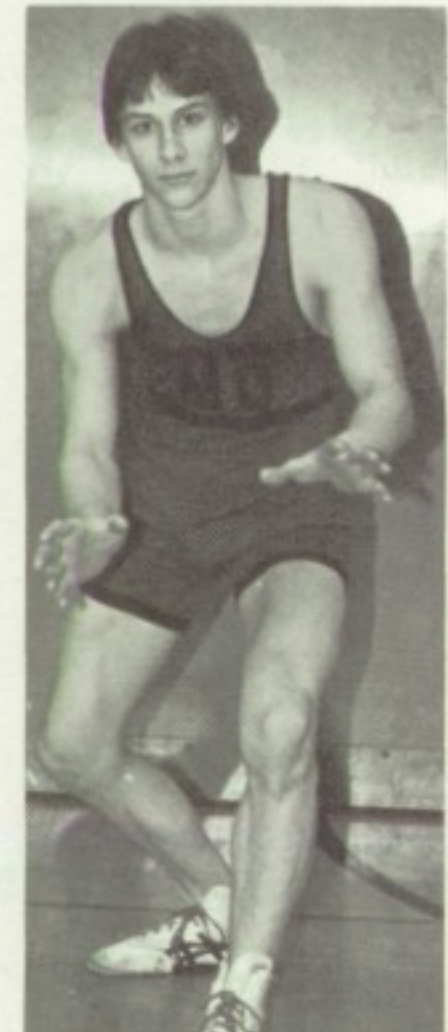
"Jay"



"Mark"



"Ted"



"Roger"

VARSITY WRESTLING CHEERLEADERS



VARSITY WRESTLING CHEERLEADERS—ROW 1: Beth Reynolds, Chris Carlson, Jennifer Fiorenzo. ROW 2: Amy Schobey, Missy Marker, Randie Spencer. ROW 3: Chris Saar, Mary Hetrick.



"Randie"