

# Wrestling

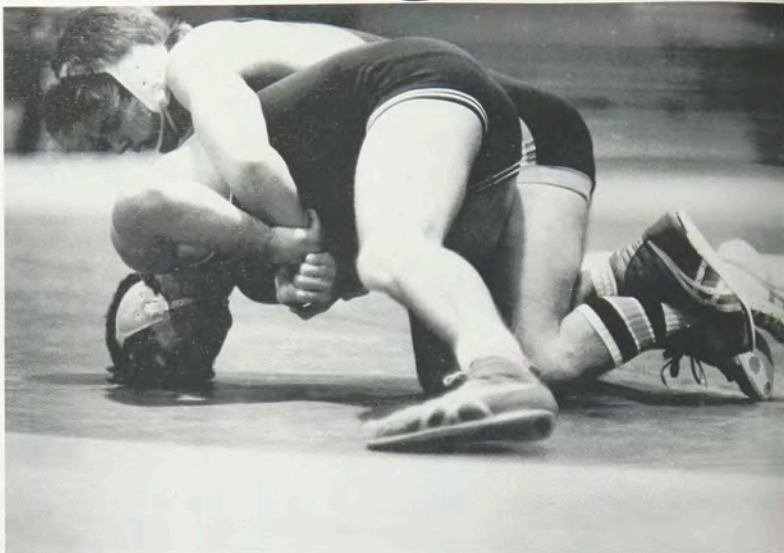
The 1986-1987 wrestling campaign was a disappointing one for Coach Earl Fuller's grapplers. Winless in 10 starts, the Tigers faced some of the top Division III teams in the country.

Charlie Schaffer, Curt Jenkins, John Nigro, Brian Hart, Jim Leamon and John Suhr led the RIT mat contingent. Schaffer was 17-13 for the year in the 142-pound bracket. He had an impressive 7-3 mark in dual meets and narrowly missed qualifying for the nationals as he posted 2-2 record in the NCAA regional qualifier.

Jenkins grappled at 150 pounds. He finished 4-2 in dual meets and 11-8 overall. He was also 2-2 in the regional qualifier. Freshman John Nigro was a solid addition in the 134-pound category. He came on strong at the end of the campaign and was a win away from making the nationals with a 3-1 record in the qualifier. He had a 2-1 dual meet record and 7-8 mark in overall competition.

Junior Brian Hart handled mat duties at 126 pounds and posted a 3-5 dual and overall record. Senior Jim Leamon and junior John Suhr were off to strong starts, but suffered season ending knee injuries. Leamon had a 9-10 overall record and Suhr was 5-2.

Earl Fuller completed his 39th year as RIT wrestling coach.



Best

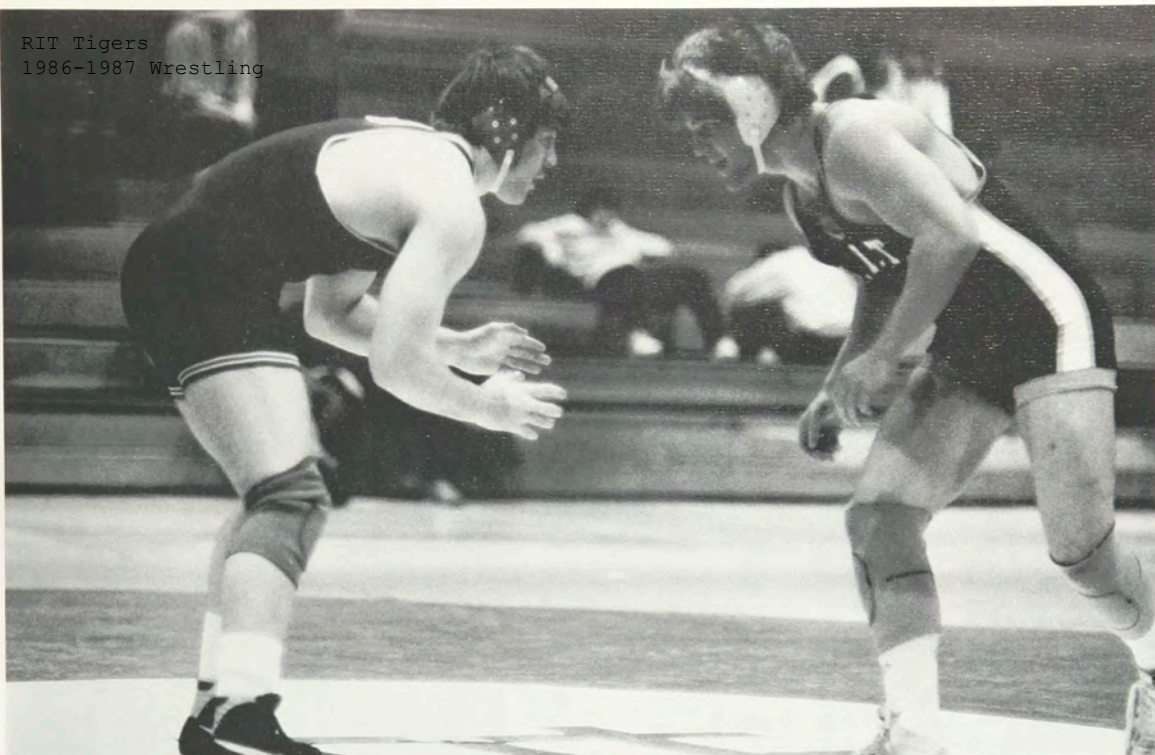


RIT Wrestling Team

**Front Row (l-r):** Andrew Clark, Louis Luba, Curtis Jenkins, Charlie Schaffer, Joe Hayden, John Nigro, Brian Hart, Tracy Hill, David Dittleman, Manager John Graziano. **Second row (l-r):** Coach Earl Fuller, Manager John Prokop, Jim Leamon, Rich Perry, Jason Buchovecky, Craig Loomis, John Suhr, Dave Hannah, Cathy Graham, John Murphy, Manager Chris Kurz.



RIT Tigers  
1986-1987 Wrestling



Best



Best