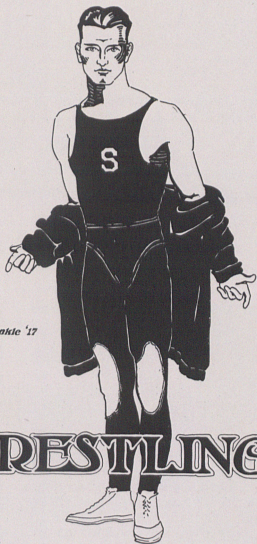


« Penn State Nittany Lions »



Donkie '17

WRESTLING

Penn State Nittany Lions
1916-1917 Wrestling

« 1918 »

« Penn State N a Tie »



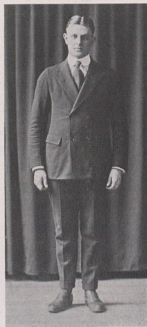
Wrestling



CAPTAIN LONG

THE 1917 wrestling team will unquestionably go down in Penn State history as the most successful team that ever used the State mats from the beginning of the game at State until the present time. Finishing the season with a clean slate, the State grapplers had the satisfaction of defeating three of the Intercollegiate Wrestling Association teams, and finally of being admitted to the Association, an honor which State has sought for many years.

To "Doc" Lewis goes much of the credit



MANAGER ROBERTS

Penn State Ho Ho

for turning out such a successful team. With but two of last year's varsity men to start with, the coach had a hard task to get his men in shape. Boston Tech. was the first opponent to appear, and the visiting team left with State holding the long end of a twenty-eight-nothing score.

Pittsburgh was State's next victim. Thirty-four to nothing showed the superiority of the Blue and White grapplers again, and the team was going in championship style. The next battle was at South Bethlehem, where Lehigh was defeated twenty-one to eight. State was not in as good condition as previously, but managed to get the majority of the bouts.

The best meet of the season was with Cornell, the Intercollegiate Champions. The Ithacans were unable to stand the aggressiveness of Captain Long's men, and the final score gave State twenty-one points to nine for Cornell. Princeton came next for the State grapplers, and the Tiger's shoulders touched the velvet to the tune of twenty-three to four.

In the final meet, State defeated Navy twenty-one to ten. This victory was the most decisive score against the middies in a long time, and served as a final revenge for the meet lost last season.



"Doc"



MILLS WORKS HIS SCISSORS HOLD

Penn State Wa Tie

The Team

Coach - - - - - W. E. LEWIS
Manager - - - - - A. W. ROBERTS
Captain - - - - - M. M. LONG

115-pound class - - - - - SMOLEY
 125-pound class - - - - - OSTERMAYER
 135-pound class - - - - - MILLS
 145-pound class - - - - - LONG
 158-pound class - - - - - SHULTZ
 175-pound class - - - - - HIGGINS
 Heavyweight class - - - - - CZARNECKI

RESULTS

Penn State - - - - - 28	Boston Tech. - - - - - 0
Penn State - - - - - 34	Pittsburgh - - - - - 0
Penn State - - - - - 21	Lehigh - - - - - 8
Penn State - - - - - 21	Cornell - - - - - 9
Penn State - - - - - 23	Princeton - - - - - 4
Penn State - - - - - 21	Navy - - - - - 10



OSTERMAYER AND SMOLEY IN ACTION