

ON THE MAT

PERHAPS one of the most singular things about the winter sport season this year, has been the enormous reflux of interest in wrestling. Where last year there were but a dozen men from which to pick a team of seven men, this year there were fifty. This seems the more encouraging when one considers the rival attractions of tumbling and boxing, which are being pursued with a zest this winter. Although this is a very good showing, Harvard has still a long way to go before she can reach the standards attained in the sport by Yale, Princeton, Cornell, and some of the southern colleges, where a hundred to a hundred and fifty men go out for the teams.

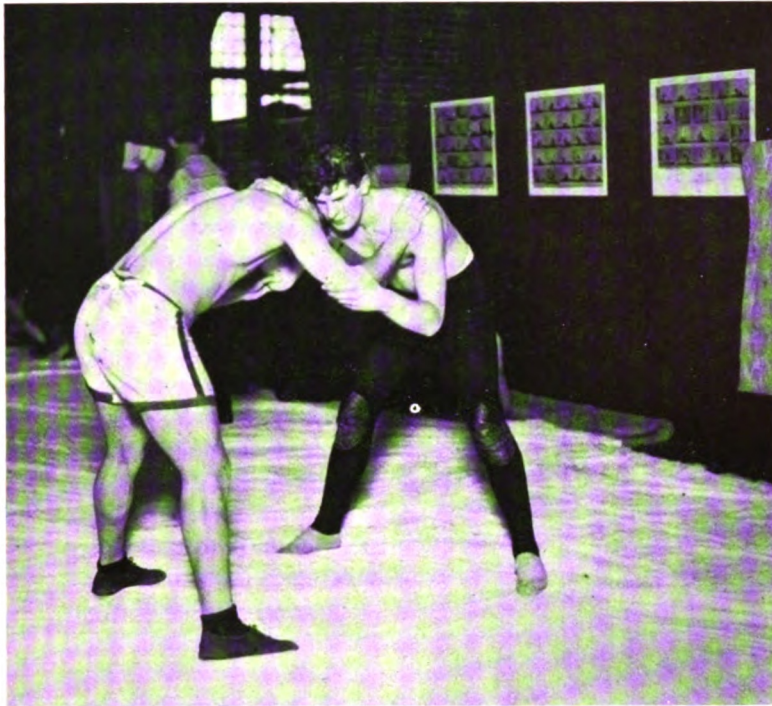
As a conditioner for all sports, wrestling is unexcelled, for it is the one sport where mental alertness is needed as well as physical strength. And it carries with it that unquestionable opportunity to prove your superiority over a rival. To be able to pin a man's shoulders to the floor carries just as much glory as to be able to hand him a "left hook" for the count of ten.

The increase in the number of men out this year has made it possible for

Coach Anderson to organize a Second and a Freshman team as well as the Varsity. This helps to develop the reserves, which are quite necessary, as it takes a man nearly a year to become proficient in the art. The process of building up must then go on slowly, but once the sport has become established, the interest is bound to be sustained. In this vicinity Huntington School and Andover are the only two schools who have any regular training in the sport at the present time.

Among the colleges of New England, Yale, Brown, Technology, Springfield, and Harvard have organized an Inter-collegiate Wrestling Association which is soon to include others. An open invitation meet is to be held at Cambridge on March 4, at which these colleges will compete and should prove extremely valuable in establishing a plane of competition. Thus with the knights of the mat twisting away in Hemenway, and the boxers pommeling each other in the ribs at the Union, it is quite evident that we shall soon be prepared to meet a foe in any form of struggle, whether it be Yale or the Germans.

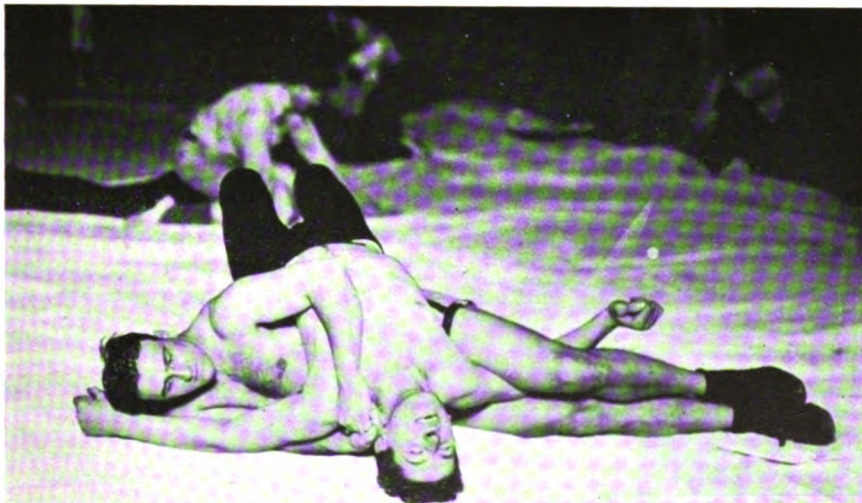




REFEREE HOLD

S. M. F., '19

W. B. Snow, '18 and E. R. Roberts, '16, in the starting position. On the wall at right are charts of wrestling holds recently presented by W. H. Page, '83, and R. M. Page, '10



SCISSORS AROUND THE ARM AND HALF-NELSON S. M. F., '19

The same men in a well-known hold

HARVARD'S HEAVY-WEIGHT WRESTLERS