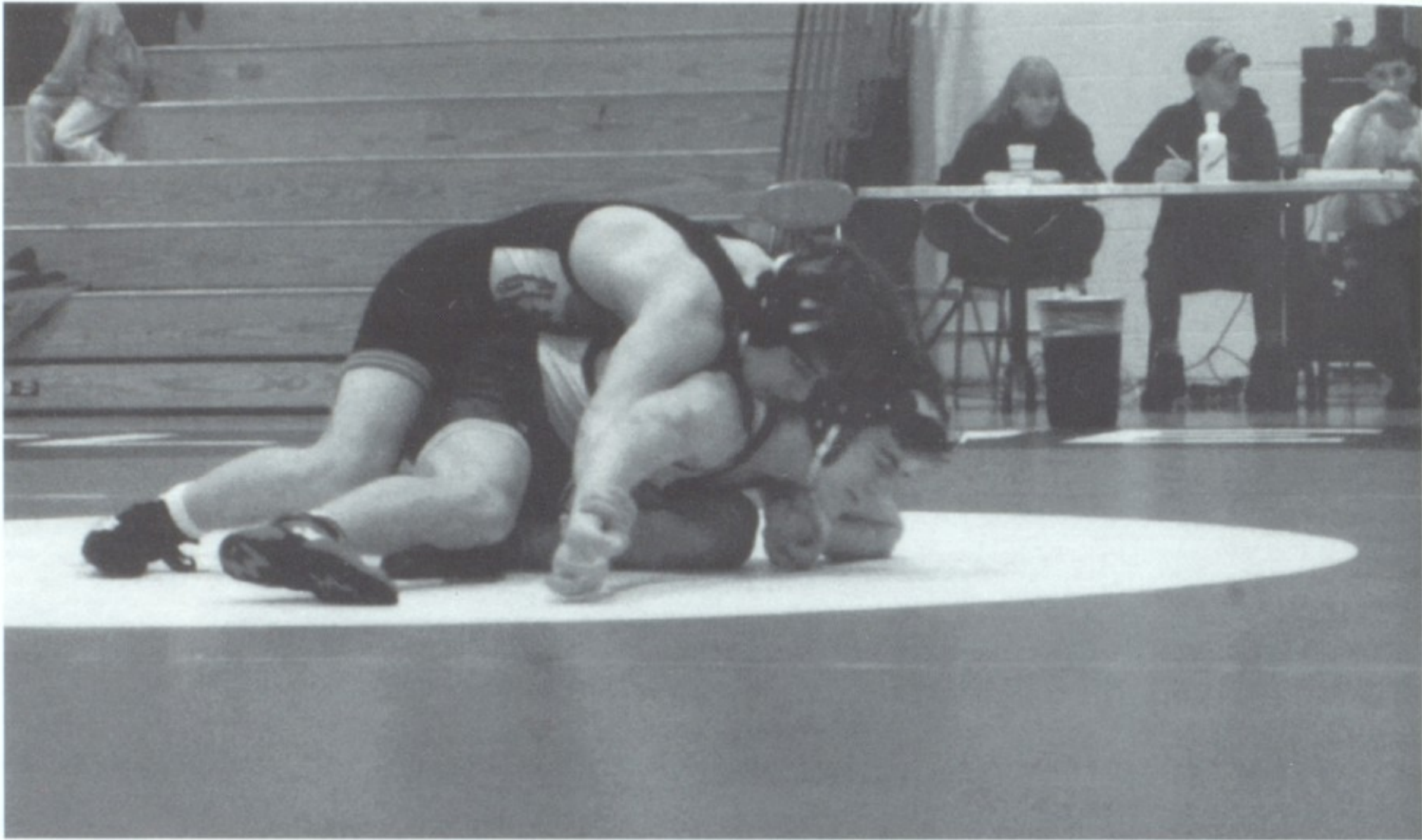
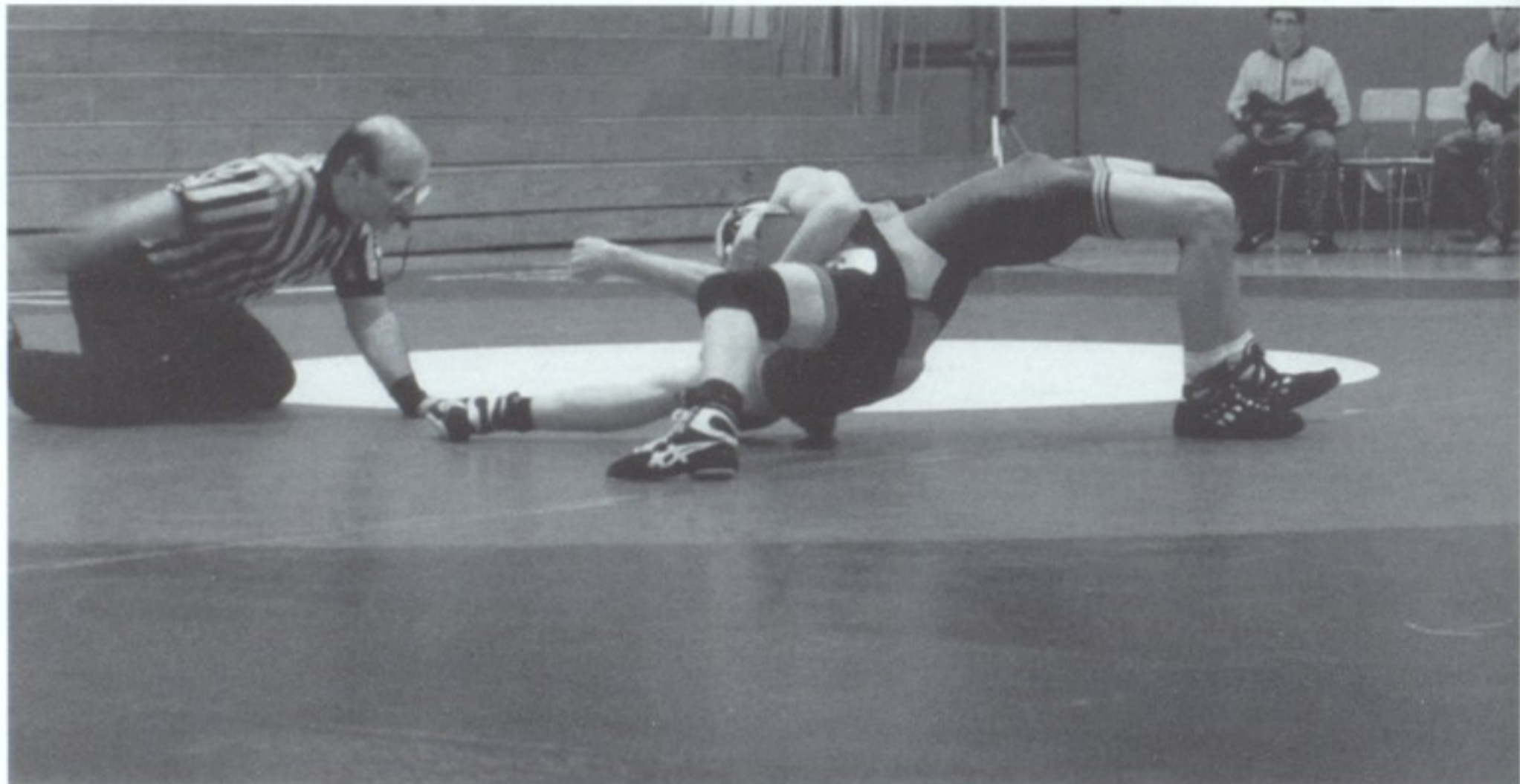


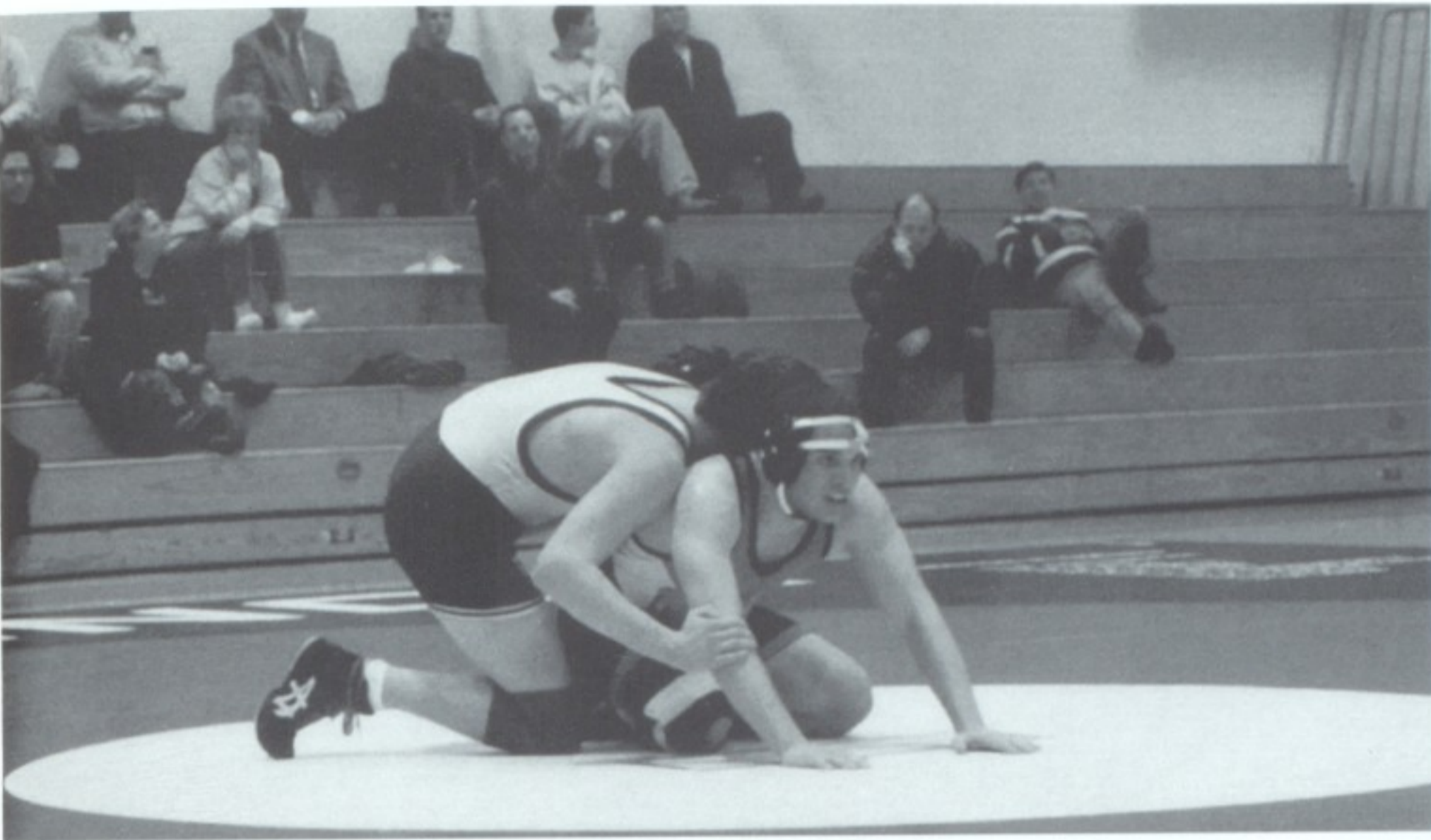
W R E S T L I N G



Scott Gregroff is seconds away from a pin.



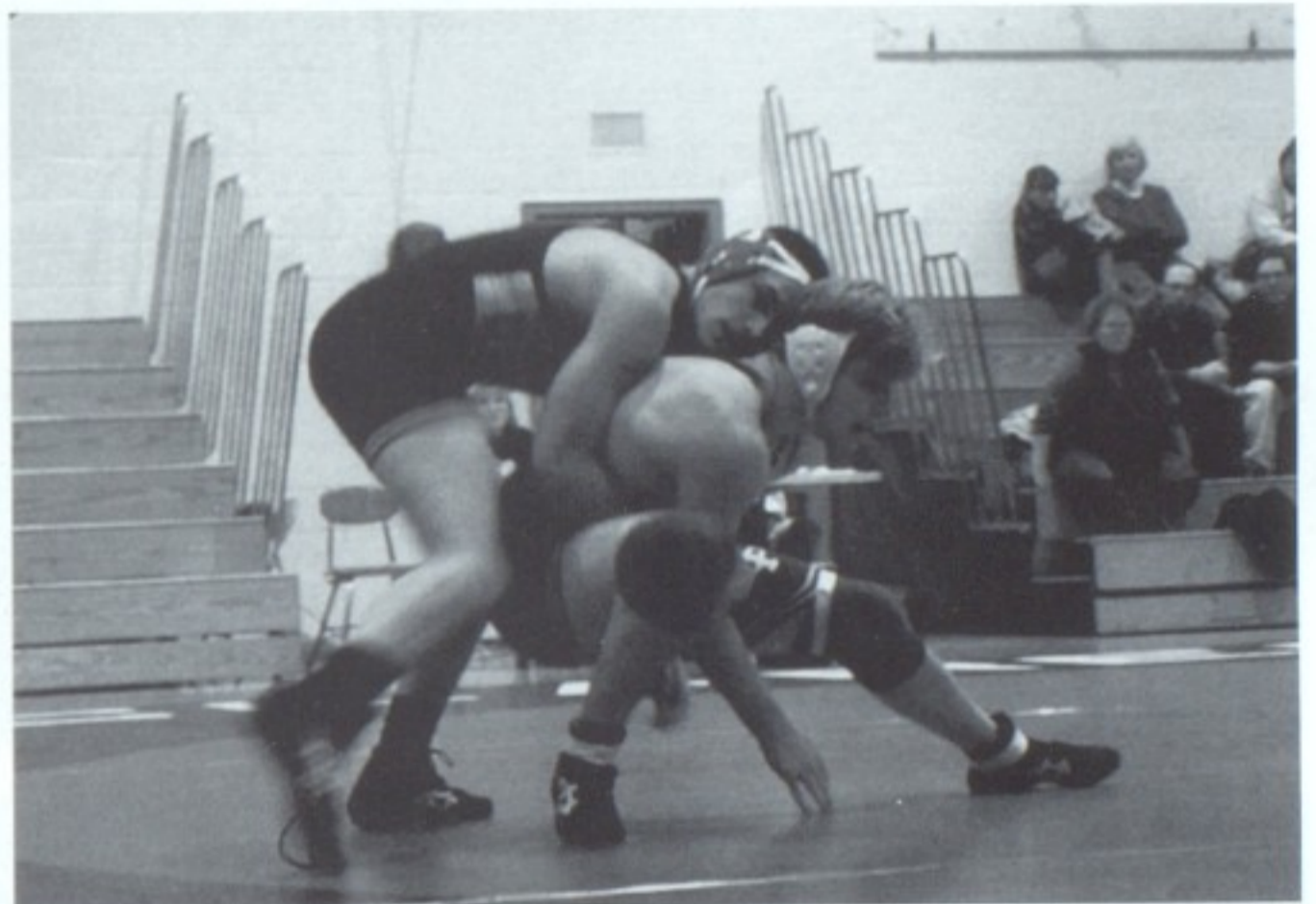
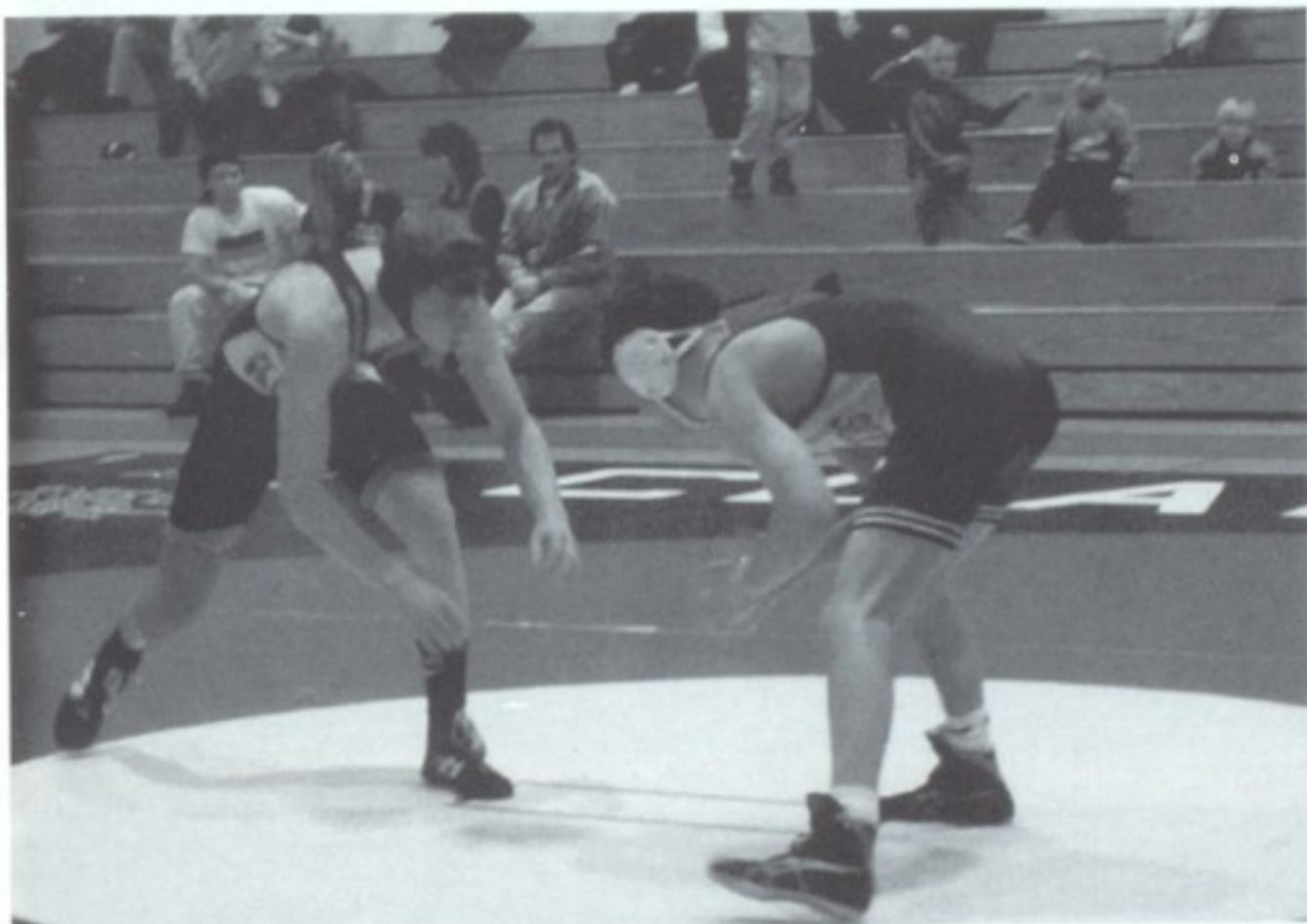
North bends over backwards at Clarence's talent.



Tim Barbour plans his pin strategy.

Josh Henderson squares up and looks down his opponent.

Chris Bayer drops his rival.



Wrestling
 Row 1: Ryan Hoekstra, Tom Dossett, Travis Grove, Adam Brunner, Don Graber, Karl Kasperzak. Row 2: Brian Maisch, Carmelo Parlato, Tim Barbour, Matt Zielinski, Tim Griffin, Josh Henderson. Row 3: Coach Vesper, Ed Hahn, Dan Georger, Rich Rabin, Scott Swan, Chris Kennedy, Ethan Cole, Brent Werner, Scott Gregoroff, Jim Marquardt, Dan Helms, Tom Sawyer, Coach Slade.