

*Standing — Coach D. See, Co-captain E. Nicholson, J. Farmer, N. Argona, J. Nadew, A. Downing, T. LaClair, manager J. Connors.  
Seated — V. Barton, J. Lewis, J. James, B. Brown, S. Giannatta, Co-captain P. Augustine, assistant manager D. Ingersoll.  
Kneeling — A. Chase, H. Scharpelli, P. Company, T. Breilbart, D. Maier.*

## WRESTLING

The Lakers wrestling team plunged into a rugged ten meet schedule by taking on three opponents in four days at the start of the 1957-58 season. Victories over these three, R.P.I., Union, and Queens University were followed by wins over Cornell J.V., Clarkson Tech, Albany State and Hamilton. The Lakers were defeated in closely contested meets by Rochester Tech and Ithaca College. The final meet, scheduled with the University of Buffalo, was cancelled by the Big Snow.

The season was highlighted by the outstanding leadership of Co-captain Pat Augustine, and by the performance of Co-captain Ed Nicholson, winner in 17 out of 18 dual meets, and heavyweight Joe Farmer, who finished his second season without a defeat in dual meet competition. Jack Lewis turned in colorful performances in pinning each of two opponents in less than 30 seconds. Spirited support from Pat Company at 123 lbs., Dillon Maier and Pete James at 137 lbs.; Bill Brown at 147 and 157 lbs.; Vince Barton, alternating with Ed Nicholson at 157 and 167 lbs.; Sal Giannetta and Nick Argona at 177 lbs. helped Oswego compile an impressive 7 and 2 record.

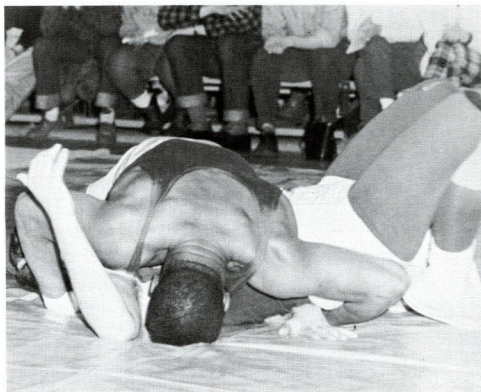
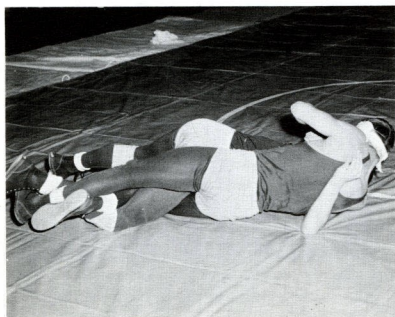
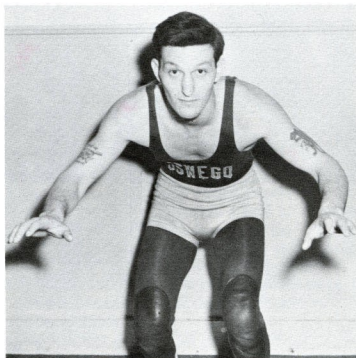
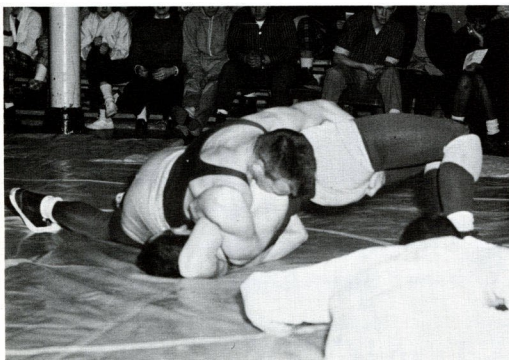
Participation by Nicholson, Augustine, Lewis, Brown and Farmer in the Wilkes Tournament added prestige to the Lakers record by placing fourteenth in the team standings in a field of fifty teams.

Coach Dave See and five wrestlers, Company, Lewis, Nicholson, Augustine, and Farmer put on a half hour television show describing and demonstrating college wrestling for Station WCNY Watertown. The program evoked much favorable comment from many Central New York viewers.

### SEASON'S RECORD

	<i>We</i>	<i>They</i>
R.P.I.	30	5
Union College	30	8
Queens College	38	0
R.I.T.	8	22
Cornell J.V.	25	9
Clarkson	25	8
Ithaca	10	19
Albany	28	8
Hamilton	40	0

# PIN



Oswego State Lakers  
1957-1958 Wrestling