



The 1925 Season

An unbroken string of triumphs in dual meets, the Intercollegiate championship, two Intercollegiate champions and three runners-up sum up the accomplishments of the 1926 Wrestling team; a record that is merely another tribute to the high grade training which Coach O'Connell has given the University's matmen during his fifteen years as coach here. Captain Affeld and Chakin, who during the season had beaten both the last year's champion and the runner-up, won the Intercollegiate titles in the unlimited and the 135-pound classes, while Loeb, Geier, and Partee acknowledged defeat to only one contestant in their divisions. Howard, who wrestled throughout the season outside his class, and Eisenhower, who was somewhat below the standard of the rest of the men, rounded out a team possessed of such general strength that it was all but unbeatable in dual meets.

The first meet, a victory over Pennsylvania with a final score of 23 to 5, showed the possibilities of a successful season. Loeb, in the 115-pound class, started the events by throwing Servais. In the next encounter, McDonald scored the only points for Penn by throwing Eisenhower. Chakin and Lillienfield then provided one of the high lights of the meet. After a few minutes of sparring, they went to the mat when Chakin tripped up his man. In struggling to get free, Lillienfield twisted his ankle, and Chakin was awarded the bout by default. In the bout in the 145-pound class, Geier won by decision. Partee's match was declared a draw after neither of the opponents was able to gain a sufficient time advantage in two extra periods. Captain Affeld and Howard won their bouts by falls.

In the contest with the team from the Rensselaer Polytechnic Institute, the Varsity made another sweeping success, obtaining five falls and keeping their opponents from scoring. Three men who hadn't wrestled against Pennsylvania competed, Pearis in the 115-pound class, Klein in the 145, and Henry in the 175, Klein and Henry gaining falls in their bouts.

In winning the Penn State match, the Red and White wrestlers gave the first sound basis for hopes of winning the Intercollegiate title. The former Intercollegiate champions were able to score only three decisions in the hotly contested encounters. Chakin especially distinguished himself by winning a decision over Captain Liggitt,



AFFELD
Captain

the Intercollegiate champion. Partee and Howard gained decisions over their opponents in bouts that went into extra periods, while Geier scored the only fall of the meet, throwing Long in four and a half minutes. It was the first time in two years that the Nittany Lions have tasted defeat.

Three falls and two decisions were amply sufficient to defeat Columbia, in the fourth contest. Loeb brought down his opponent after three minutes of wary circling, and Eisenhower gained a fall in the second extra period of a closely contested bout. Chakin made it three straight falls by going to the mat immediately with Olliphant, pinning his shoulders after five minutes of very fast wrestling. Geier held a time advantage of eight minutes and forty-six seconds over Brown but failed to get a fall. Partee found Pitkin stronger opposition, but won a decision with a large time advantage. In the 175-pound class bout, Howard was robbed of a fall over Sesit by the bell, and then lost the decision when Sesit obtained a few seconds advantage in the extra periods. Johnson, substituting for Captain Affeld in the unlimited class, was forced to retire from the mat, when he injured his knee.

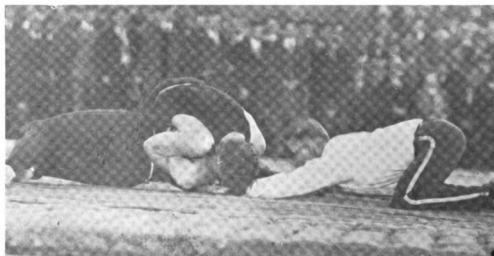
At Bethlehem, the next week, the Lehigh team, rated as one of the strongest in the East, was the next victim of the successful Red and White grapplers. Captain Affeld and Best of Lehigh, Intercollegiate title holder in the 125-pound class, scored the only falls in the meet. Loeb's and Chakin's victories over Reed and Lewis, both of whom placed in the 1925 Intercollegiates were outstanding. Two more decisions, gained by Geier and Howard completed the victory.

In the last dual meet of the year, Syracuse offered little serious resistance to the victorious advance of O'Connell's team. Captain Jeffers of the Orangemen was the only visitor to score, gaining a decision over Cohen in a match that went into extra periods. The Varsity scored a total of four falls and two decisions for twenty-six points.

Cornell demonstrated conclusively its ability on the mat, in the Intercollegiates at

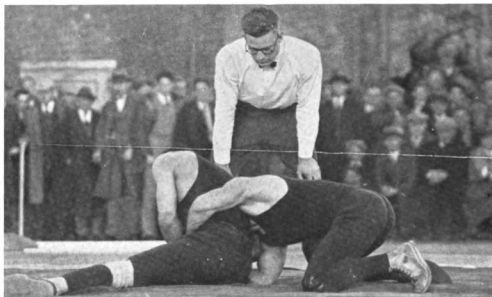


Graphic
W. C. O'CONNELL, II
Coach



AFFELD THROWS PATTERSON, SYRACUSE

Top



CHAKIN WRESTLING VANDERPOOL, SYRACUSE

Try

Penn State, by amassing 22 points in capturing the title, two first places, three second places, and six falls figuring in the decided victory. Affeld, Chakin, Loeb, and Partee won their way into the final matches, while Geier although eliminated from the finals won second place in his class by defeating Ace of Penn State and Warner of Syracuse in the second place matches.



E. U. HILL, '26
Manager



S. C. OSBORNE, '27
Assistant Manager



Hill Henry Johnson O'Connell Affeld Howard Osborne
Loeb Geier Chakin Eisenhauer Partec Pearis Klein

1926 Wrestling Team

FRANK OTTO AFFELD, '30	Captain
EDWARD UPDIKE HILL, '26	Manager
SAMUEL CARSON OSBORNE, '27	Assistant Manager
WALTER CHRISTOPHER O'CONNELL, '11	Coach

TEAM

Featherweight Class—115 pounds

WILLIAM SIMON LOEB, '26

Specialweight Class—125 pounds

FRANKLIN SYLVESTER EISENHAUER, '26

Lightweight Class—135 pounds

ABRAHAM CHAKIN, '26

Welterweight Class—145 pounds

JOHN NEWTON GEIER, '27

Middleweight Class—158 pounds

GOODLOE MALONE PARTEE, JR., '26

Light Heavyweight Class—175 pounds

MILFORD CARLYLE HOWARD, '26

Heavyweight Class—over 175 pounds

FRANK OTTO AFFELD, '30, '26

RECORD—DUAL MEETS

Date	Score	Score	Place
February 6	Cornell 23	Pennsylvania 5	Ithaca
February 13	Cornell 31	R. P. I. 0	Ithaca
February 20	Cornell 14	Penn State 9	State College
February 27	Cornell 21	Columbia 8	Ithaca
March 6	Cornell 17	Lehigh 8	Bethlehem
March 13	Cornell 26	Syracuse 3	Ithaca

INTERCOLLEGIATES

Cornell 22; Lehigh 15; Penn State 14; Yale 12; Princeton 7; Pennsylvania 6; Syracuse 4; Columbia 1.