

★ Wrestling Squad is 4th In Conference Tourney

This year's edition of the Warrior wrestlers has gotten off to an impressive start. Coach Whitcher's Sallies triumphed over Westfield in a conference match on Tuesday, December 10th with a score of 27 to 19.

The second big victory came when they trounced Panama 55-5 on Wednesday night at home in a make-up match. Sallies took an easy win over this squad which is in its first year in Conference play. The Warriors won eleven of the thirteen matches and drew in another.

Another good showing was made at the Conference Tournament at Maple Grove on Friday and Saturday, December 13 and 14. The big winner for Salamanca was Dennis Painter with three pins. He was the only boy in the tournament to win a first place with three pins.

The team won a fourth place in the final tournament score. Gary Bradt won his first three bouts but lost by a close 6-4 decision in the championships. Dean Grabowski took a fourth place. Dave Nash, Sally unlimited class wrestler, was eliminated due to lack of competition.

This year's squad under coaches Whitcher and Keeler is showing enthusiasm and a tremendous desire to win. The season should be one of Salamanca's best if the boys continue their winning streak.

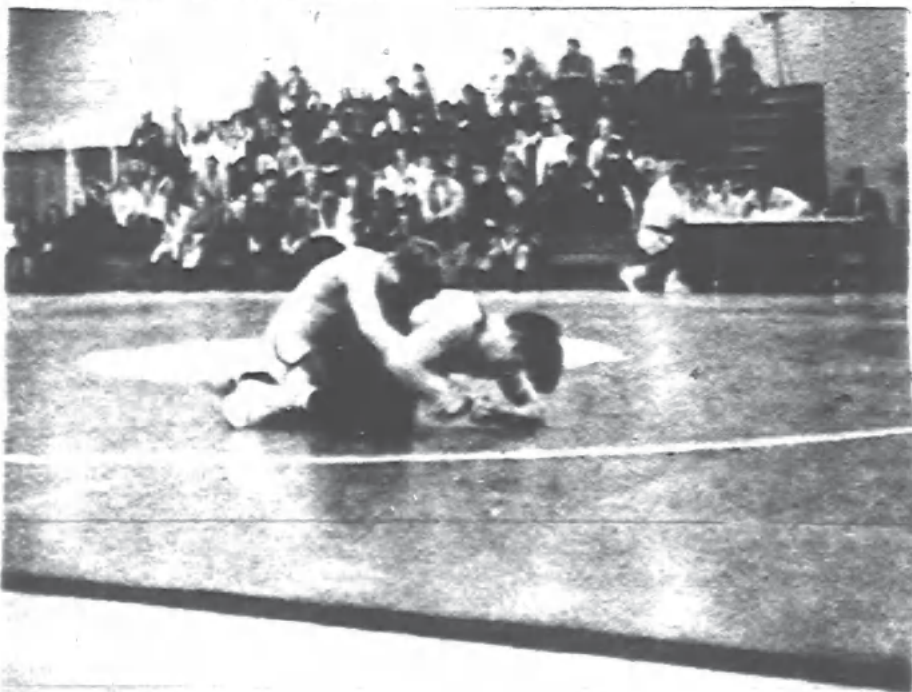
December Snows Draw Sally Skiers To Vermont Slopes

The appearance of snow on the ground brings the skiers of Sally High to life. Thoughts now turn to Vermont — the annual ski trip. This year the Ski Club has made plans to travel to Bennington, Vermont. Here the skiers will spend three days only minutes away from several famous ski resorts. The group will travel from Bennington to Mt. Snow, which is approximately a forty-five minute drive. Another day, an hour ride will open the slopes of Stratton to the Sally skiers.

The date of the trip is January 23-26. The skiers will leave Thursday (the last day of exams) about 11:00 P.M. and return home late Sunday evening, January 26.

At Bennington, which incidentally is Dr. Kirsch's home town, the Club has reservations at The New Englander. The motel has provided rooms for groups of four or five, complete with television. The cost of the trip approximates \$35.00 per person. This includes bus fare, motel and meals.

Other activities involving the Ski Club include ski lessons. These lessons are not as yet definite but are a great



Bruce Hutchison exerts pressure in a body hold on his opponent from Panama High School in recent match in Sally High Gym.