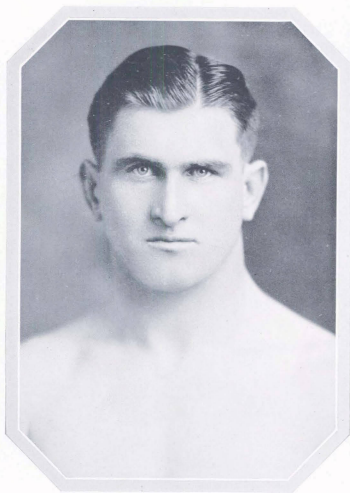


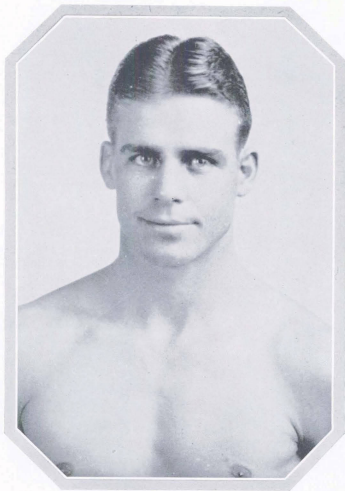
WRESTLING



EARL MCCREADY

Earl McCready has won his way into the heart of Aggieland with his constant smile and wrestling ability. He will long be remembered as one of the Aggies' greatest matmen.

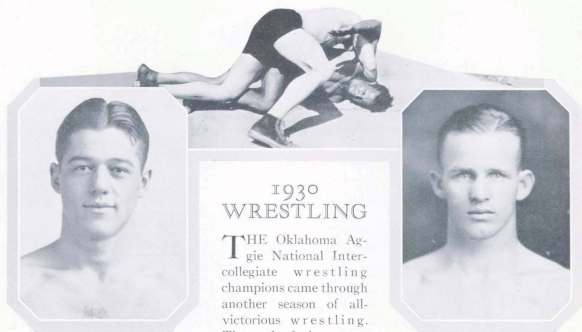




JACK VAN BEBBER

Jack VanBebber is probably the leading 165-pound wrestler in the United States. He will lead the Aggies next year when they attempt another year of victorious campaigning.





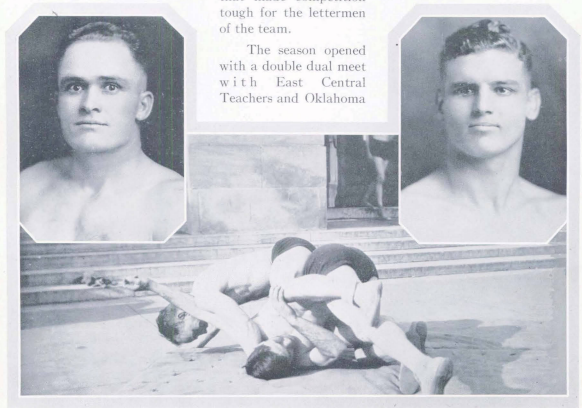
1930
WRESTLING

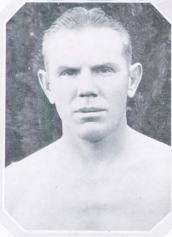
THE Oklahoma Aggie National Intercollegiate wrestling champions came through another season of all-victorious wrestling. The end of the season

marked the tenth year of undefeated competition, and saw the string of unbroken dual meet victories mount to 56.

Coach E. C. Gallagher, known as the Dean of American Wrestling Coaches, had four national champions around which to build his team for 1930. The champions were: Arlie Tomlison, 145 pounds; Jack Van Bebber, 165 pounds; Conrad Caldwell, 175 pounds; and Captain Earl McCready, heavyweight. Along with the veterans came a promising crop of sophomore matmen that made competition tough for the lettermen of the team.

The season opened with a double dual meet with East Central Teachers and Oklahoma





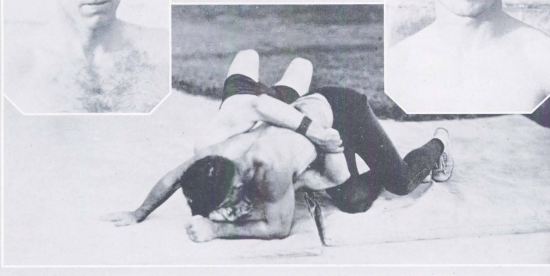
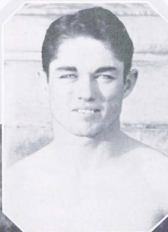
City University. Gallagher sent two teams against the state school combines and defeated them.

Coach Paul Keen and his Oklahoma University Sooners invaded Aggie land with high hopes of handing the

Aggies their first defeat in nine years. After winning the opening three rounds the Aggies opened their big guns to score five victories and again send the Sooners back with a zero in the win column.

The Aggies next invaded Iowa territory to engage Cornell College and Iowa State. Both teams were handed a decisive defeat. Cornell was blanked while Iowa State scored wins in two divisions.

The Kansas Aggies, coached by Buel Patterson, former Aggie grappler, came to Stillwater with a powerful combine, but were unable to turn the trick that over fifty teams have attempted to do in the past ten years.



1930 WRESTLING

A LONG trek into West Virginia's mountainous country netted the Aggies their fourth win over the powerful mountaineers of the last four years.

The National Intercollegiate Tournament, sponsored by Penn State at College Station, Pennsylvania, was added to the Aggies' long string of successes in March. Many upsets were experienced in the preliminary and quarter final rounds of the tourney. Only three national champions were able to fight their way to the final pairings in the nation's classic.

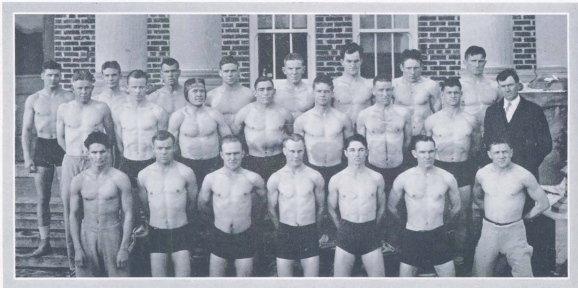
For the first time in many years it seemed as if the Aggies would lose their claim for national supremacy, when Oklahoma University and Illinois placed several men in the final rounds. The Aggies placed Jack Van Bebber in the 165-pound class, Conrad Caldwell in the 175-pound class, and Captain Earl McCready in the unlimited division.

With the three remaining rounds of the tournament left, and the Oklahoma Aggies without a first place, Ed Gallagher turned his big guns loose on the opponents and gained three titles in quick succession to again lay claim on national supremacy. Enough second and third places were won to give the Aggies a 27 to 14 lead over Illinois, their closest rival.

At the time this publication went to press the Aggies were in New York City fighting for the National A. A. U. championship. This is the first time in the history of wrestling at Stillwater that Ed Gallagher has attempted to corner both major mat meets in one year.

Earl McCready, champion of Canada and the United States, will be the only man lost by graduation from the Aggies combination. Without a doubt the matmen will continue their march in mat supremacy during the 1931 season.

Jack Van Bebber, national champion in the 165-pound class, has been elected to captain the team during the 1931 season. In the selection of Van Bebber as successor to Captain Earl McCready the team again elects to follow an undefeated champion.



The 1929-1930 Wrestling Squad.